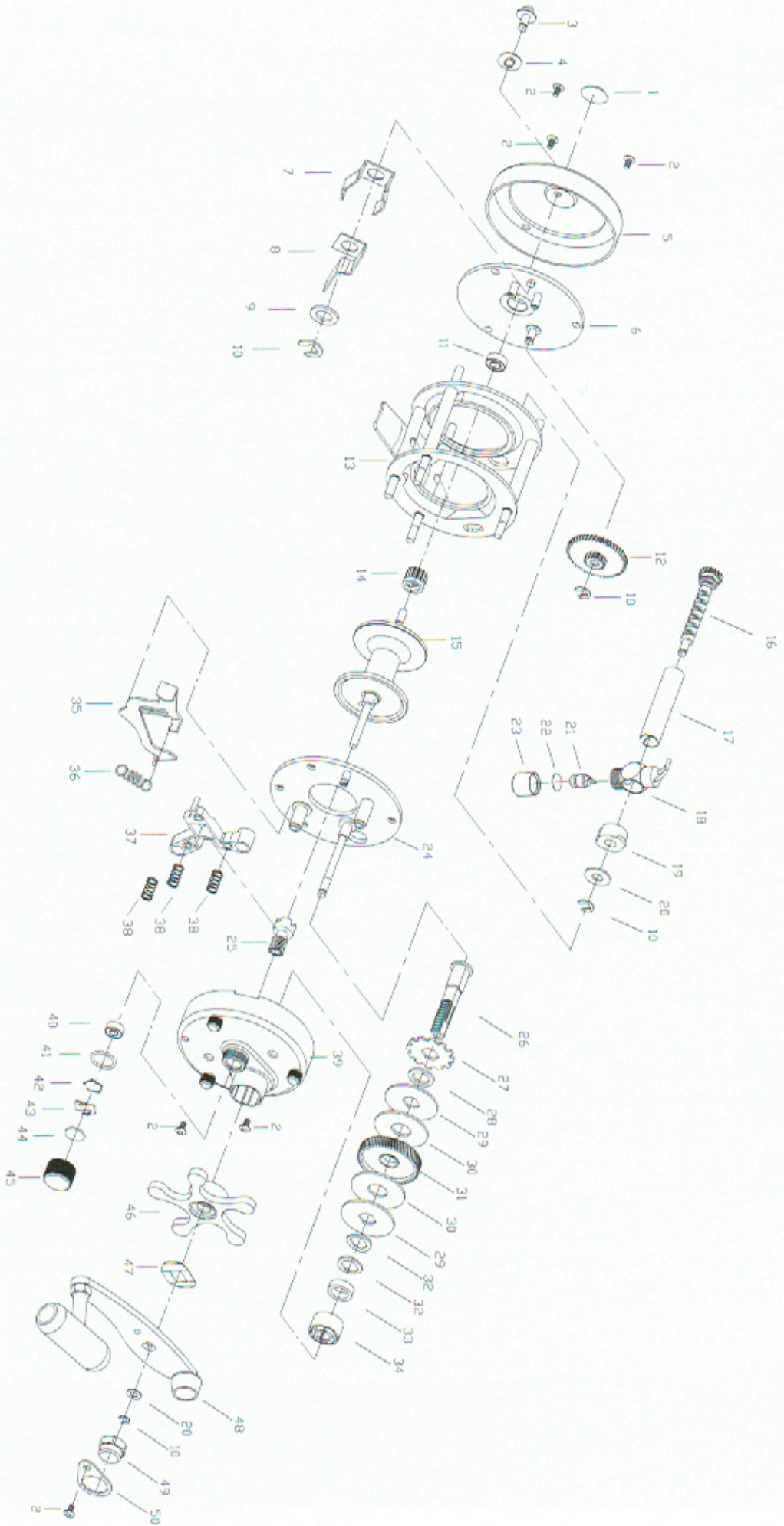


Ming Yang Reels Model CL30

Note: When ordering parts, please add CL30- to the corresponding part number as identified by diagram.



Ming Yang Reels

Model CL30

Note: When ordering parts, please add CL30- to the corresponding part number as identified by diagram.

Part No.	Description	Part No.	Description
CL30-1	Label	CL30-30	Drag Friction Disc
CL30-2	Screw	CL30-31	Main Gear
CL30-3	Bait Clicker Button	CL30-32	Drag Spring Washer
CL30-4	Bait Clicker Button Washer	CL30-33	Bushing
CL30-5	Left Side Plate	CL30-34	Anti-Reverse Ball Bearing
CL30-6	Left Gear Plate	CL30-35	Thumb Button
CL30-7	Latch Spring	CL30-36	Latch Spring
CL30-8	Pawl	CL30-37	Yoke
CL30-9	Washer	CL30-38	Yoke Spring
CL30-10	E-Ring	CL30-39	Right Side Plate
CL30-11	Ball Bearing	CL30-40	Ball Bearing
CL30-12	Level Wind Gear	CL30-41	O-Ring
CL30-13	Main Body Assembly	CL30-42	Retaining Clip
CL30-14	Level Wind Pinion Gear	CL30-43	Cast Control Brass Washer
CL30-15	Spool Assembly	CL30-44	Cast Control Rubber Washer
CL30-16	Worm Shaft	CL30-45	Cast Control Knob
CL30-17	Line Guard	CL30-46	Star Drag Handle
CL30-18	Line Guide	CL30-47	Handle Spring Washer
CL30-19	Bushing	CL30-48	Handle
CL30-20	Washer	CL30-49	Handle Nut
CL30-21	Line Guide Pawl	CL30-50	Latch Keeper
CL30-22	Washer		
CL30-23	Line Guide Pawl Cap		
CL30-24	Right Gear Plate		
CL30-25	Pinion Gear		
CL30-26	Crankshaft		
CL30-27	Clutch Disc		
CL30-28	Smaller Washer		
CL30-29	Bigger Washer		